

The background of the slide is a solid dark brown color. Overlaid on this background are several large, stylized leaves in various shades of brown and tan, creating a layered, autumnal effect. The leaves are scattered across the frame, with some appearing more prominent than others.

# Green Space/Trail Planning

Environmental Task Force  
Corridor Planning Project

# Plan Commission's #1 Priority for Environmental Task Force:

“Prepare a proposed green space or trail plan based on the land use maps. Comprehensive Plan calls for linear parks and trails along all major riparian corridors to form a necklace of conservancy space. A concept plan for trails has been done. ETF would refine concept plan and complete a detailed plan taking into consideration future open space preservation, environmental corridors, etc.”

# Green Space Corridors

- Linear strips of land connecting parks, open space and wildlife habitat.
- A contiguous pathway through River Falls could (should?) also connect community destinations other than parks.

# Proposed Corridor Types based on Function

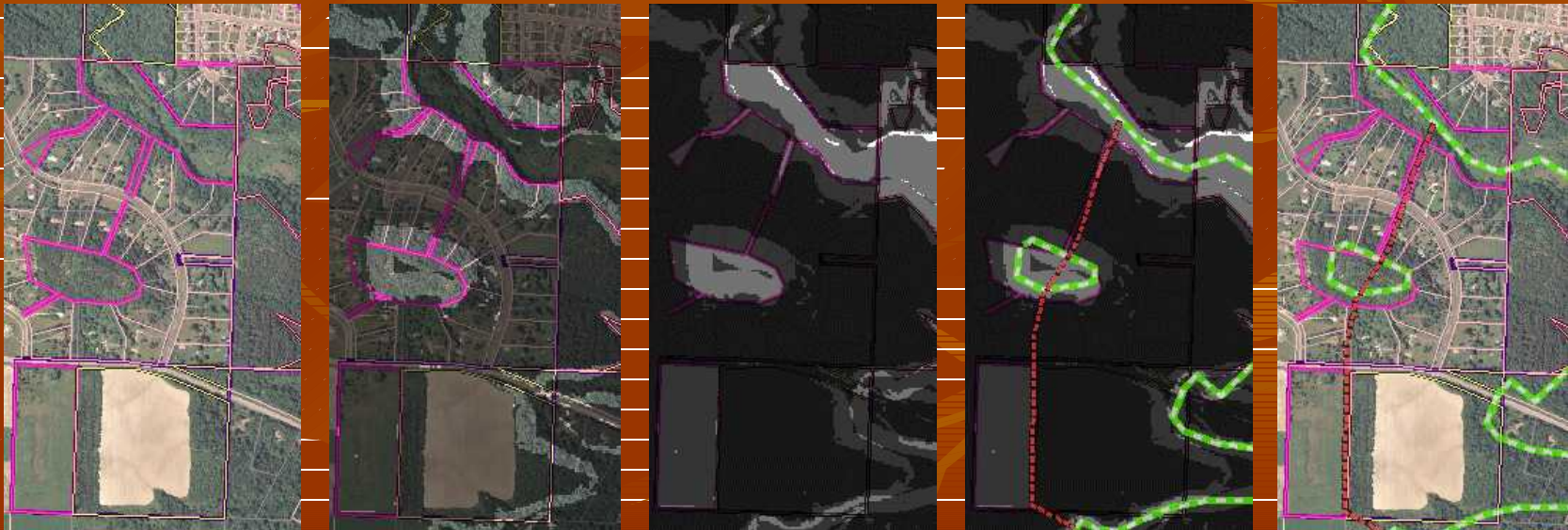
- Type A - Destination Corridors
  - Function: Point A to Point B connectivity
- Type B - Recreational Corridors
  - Function: Recreation
- Type C – Environmental/Green Space Corridors
  - Function: Environmental Preservation

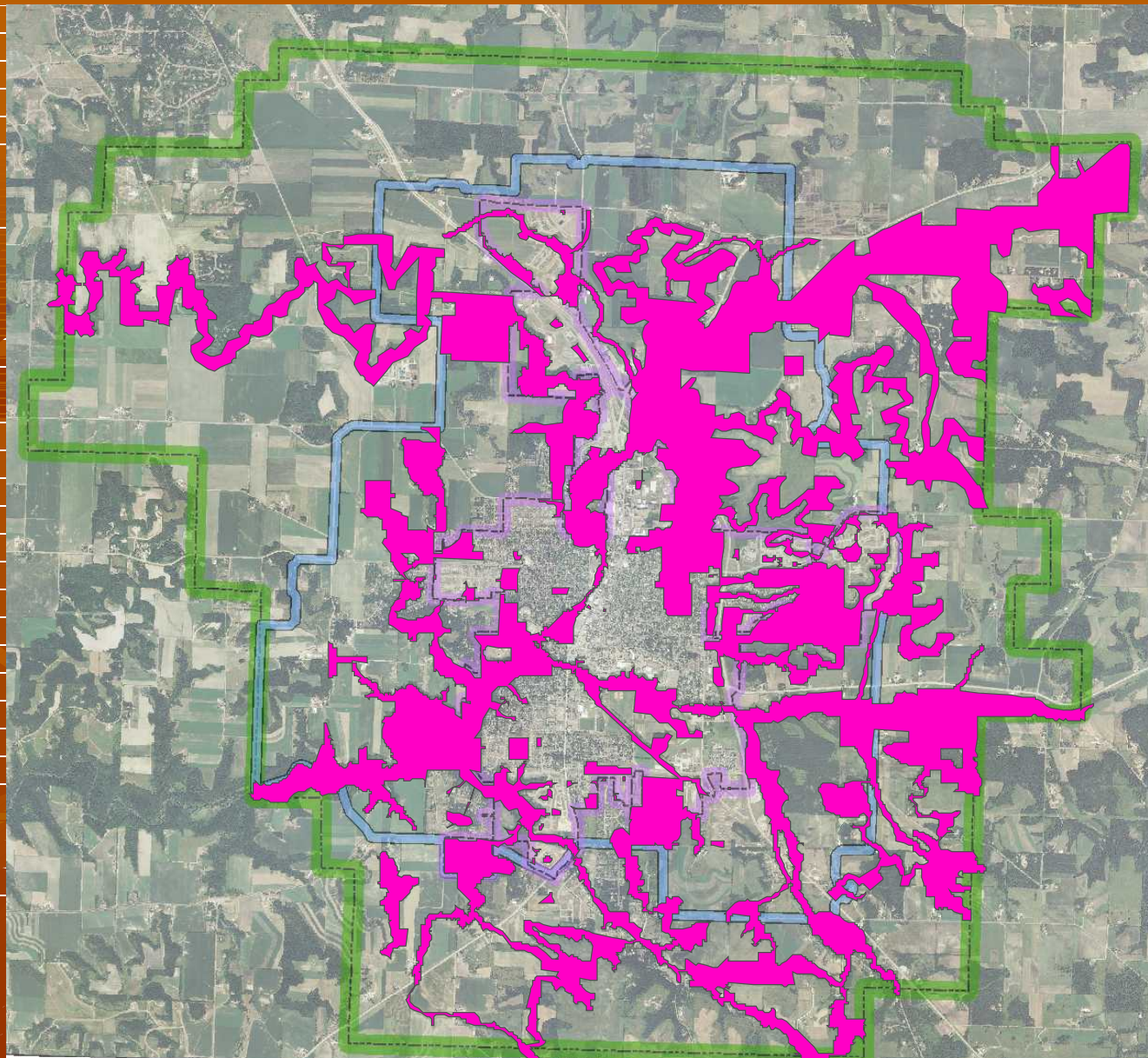
## Factors used to Identify Corridors

- Slopes
- Wetlands
- 75ft stream buffers
- Floodplains
- Lakes and rivers
- City/county controlled property (parks, easements, outlots, open space)
- Land cover

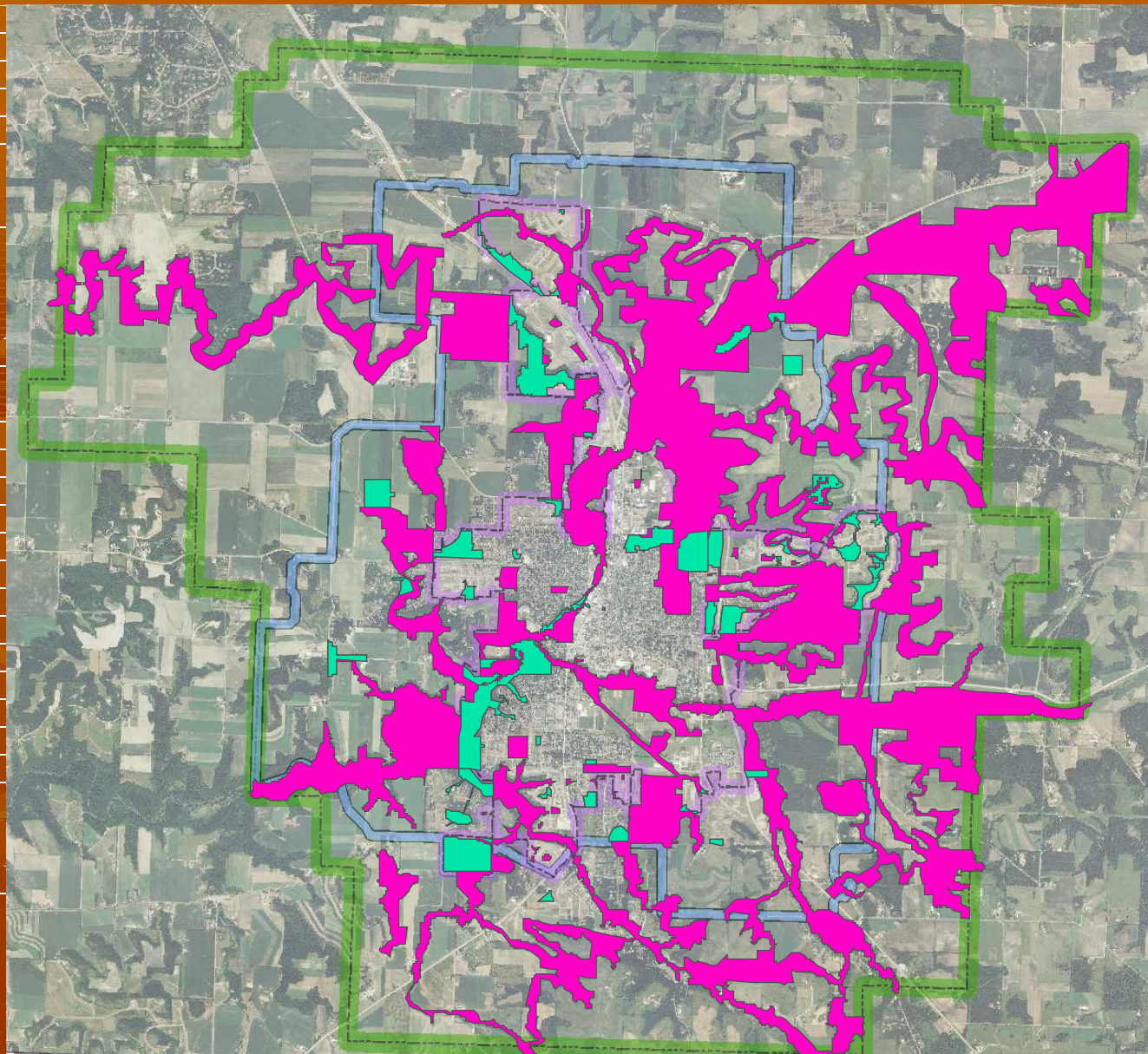
# Identifying Corridors

- Each factor is added to the map as a separate layer.
- Areas undesirable for corridors are colored black on the map
- Areas desirable for corridors remain uncolored
- It is then possible to find potential areas for corridors where there are strong paths.

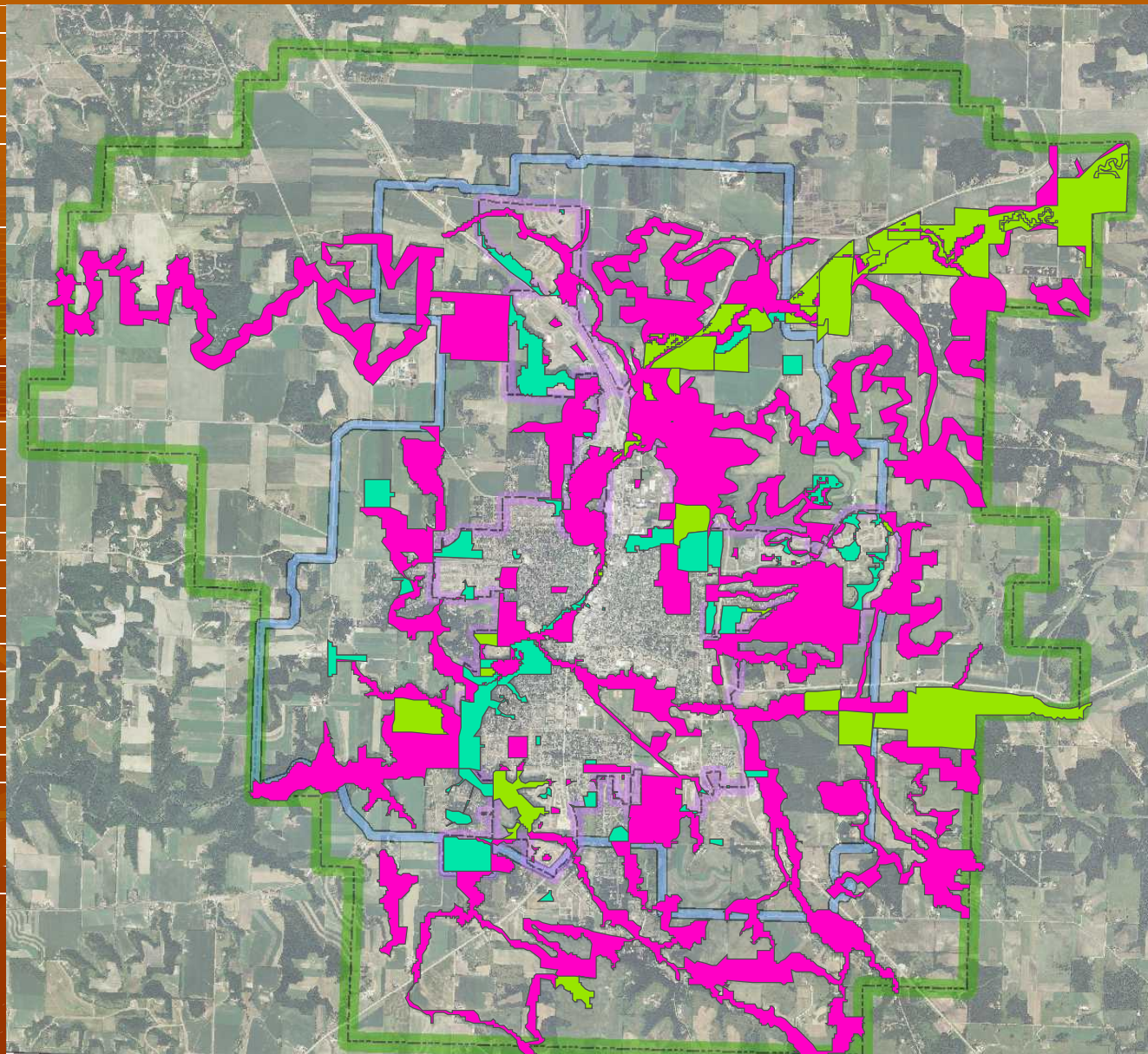




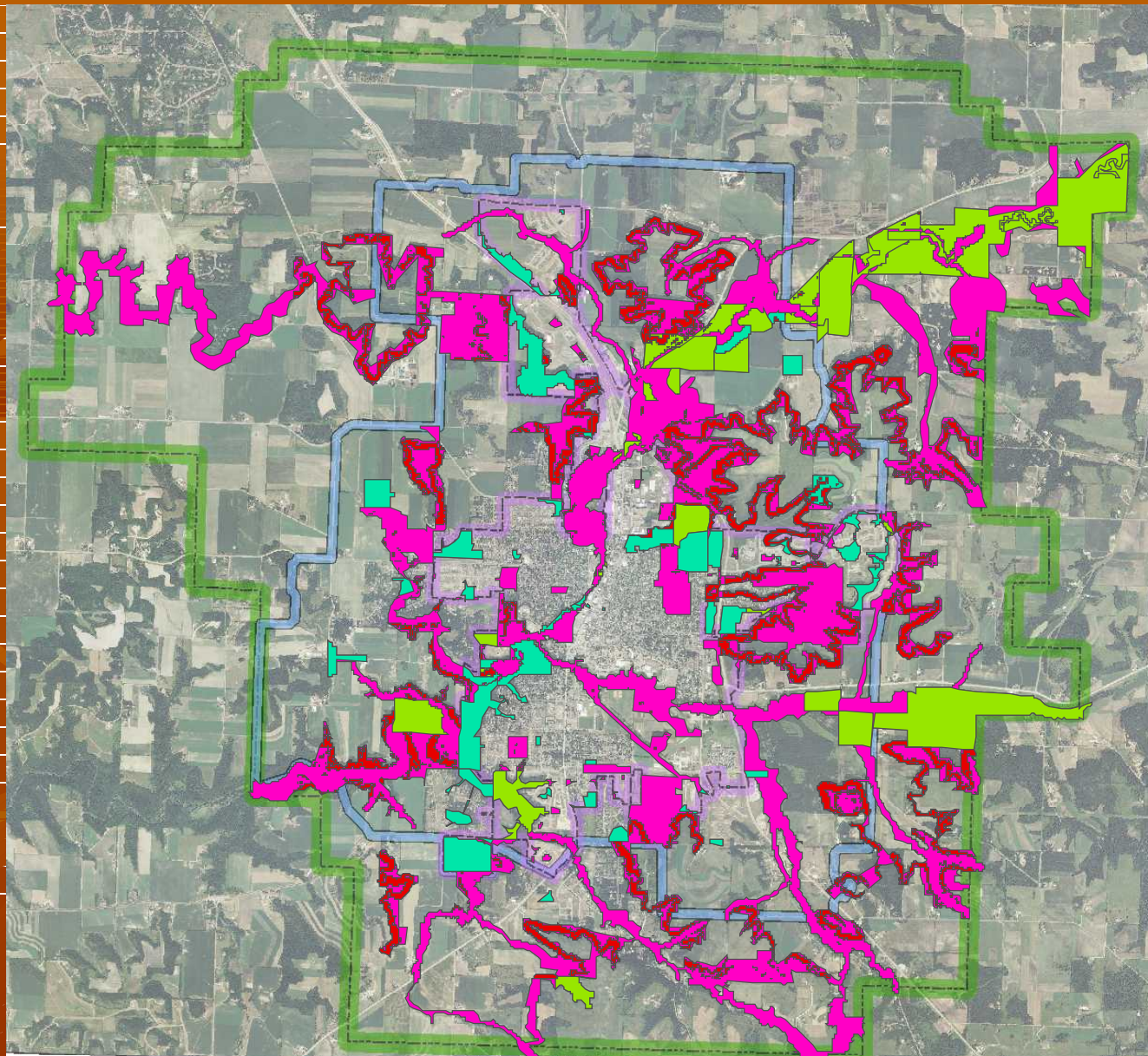
**The entire area delineated as Green Space is 7,048 acres. Remember, a significant portion of those acres have already been identified and/or protected.**



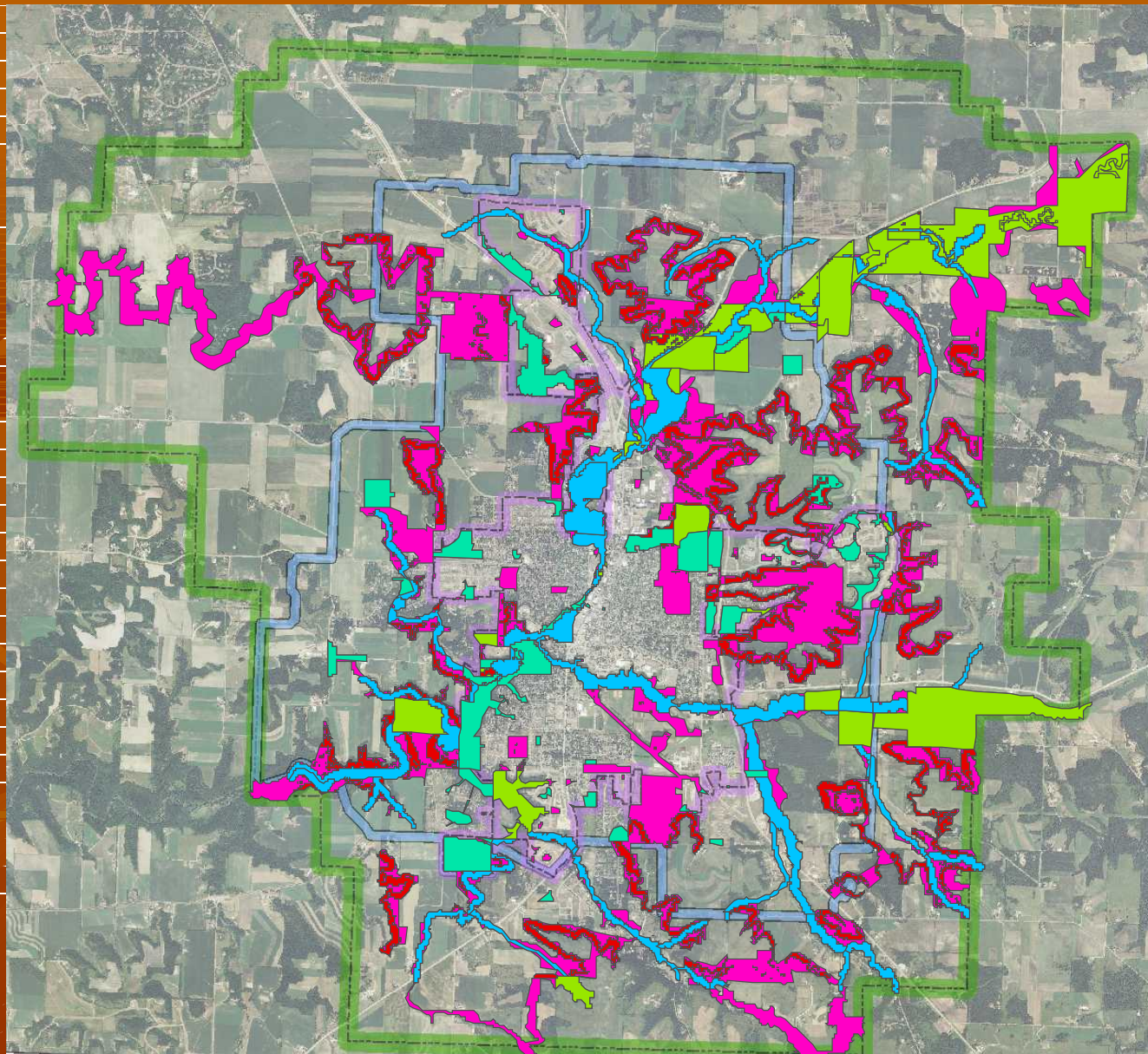
**City,  
Township  
and private  
parks occupy  
609 acres of  
Green Space**



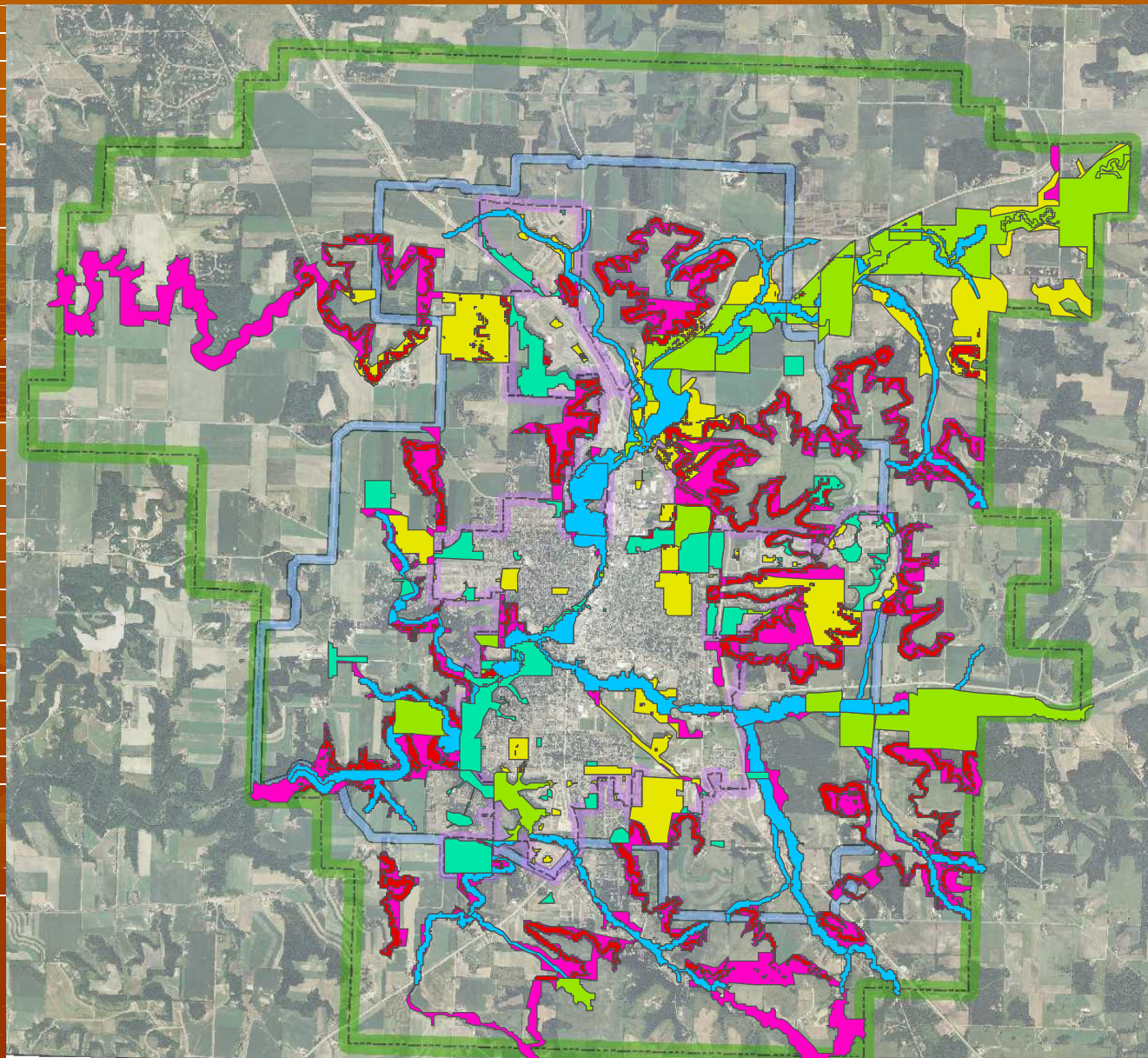
**Conservancy  
areas  
(including  
DNR lands  
and Project  
Boundary,  
and other  
easements)  
protect or  
identify 1,158  
acres as  
important for  
conservation**



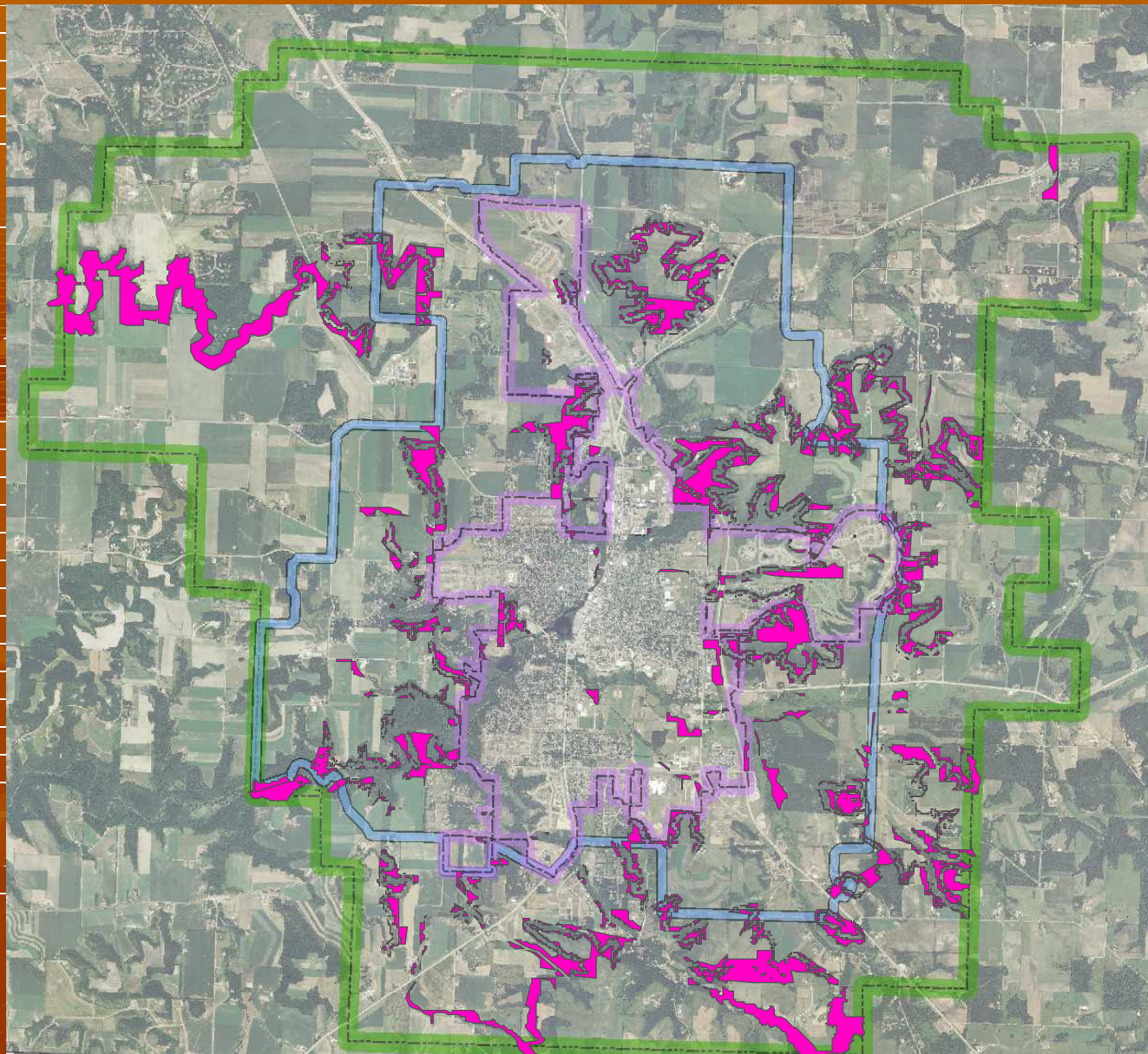
There are  
1,462 acres  
of slopes  
greater  
than 20%



**Stream  
Buffers  
currently  
protect 1,194  
acres.**



An additional  
951 acres are  
Outlots,  
Schools,  
Cemeteries  
and other low  
development  
land uses



Which leaves  
1,673 acres of  
newly  
identified  
Green Space

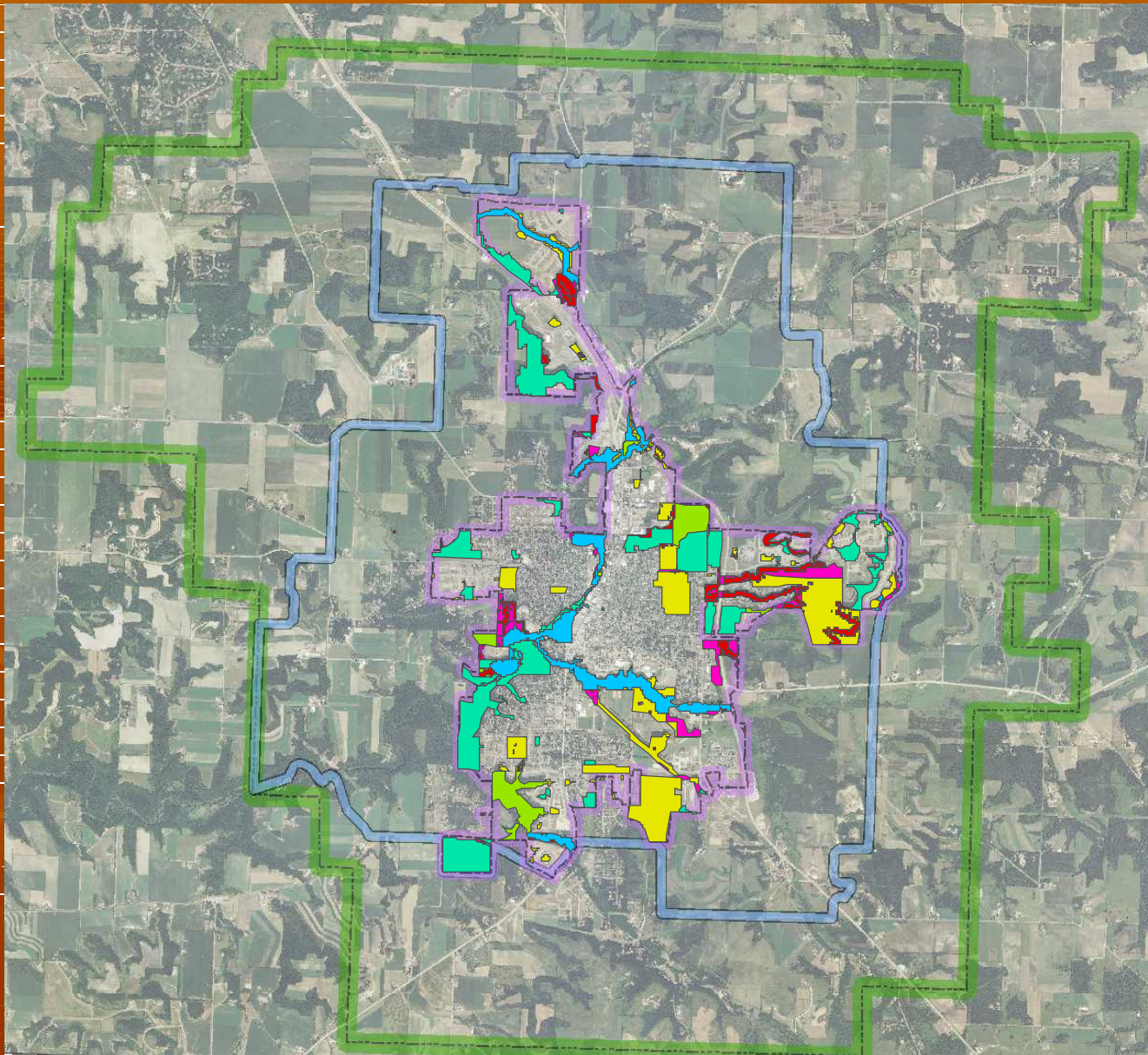
Land cover adjacent to existing Green Space

Connects existing Green Space

Wooded Slopes

Fills in gaps within existing Green Space

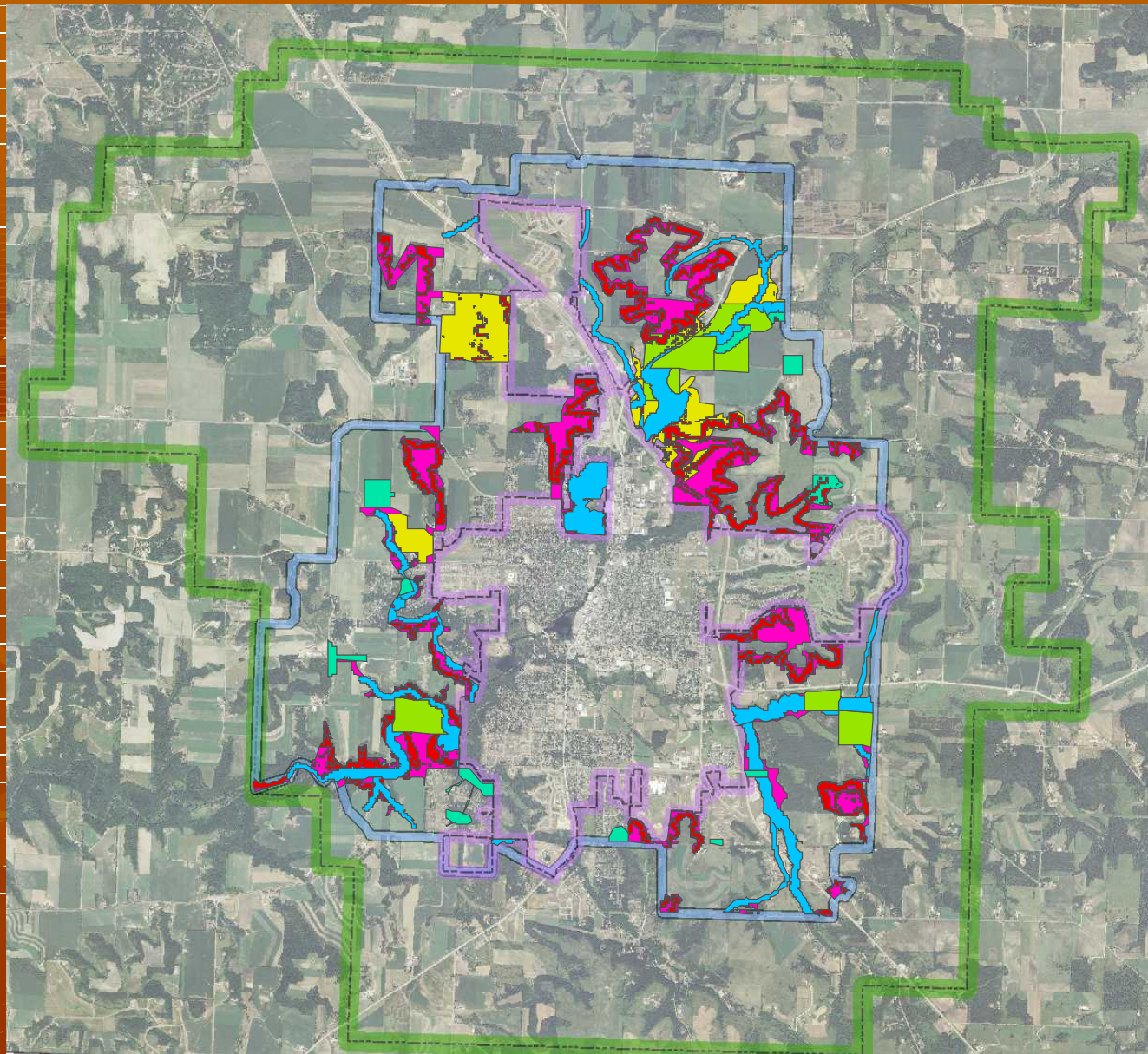
**Each new  
Green Space  
has a defined  
reason for  
belonging in  
the system.**



**Within  
Corporate  
Limits...**

# Acres within Corporate Limits

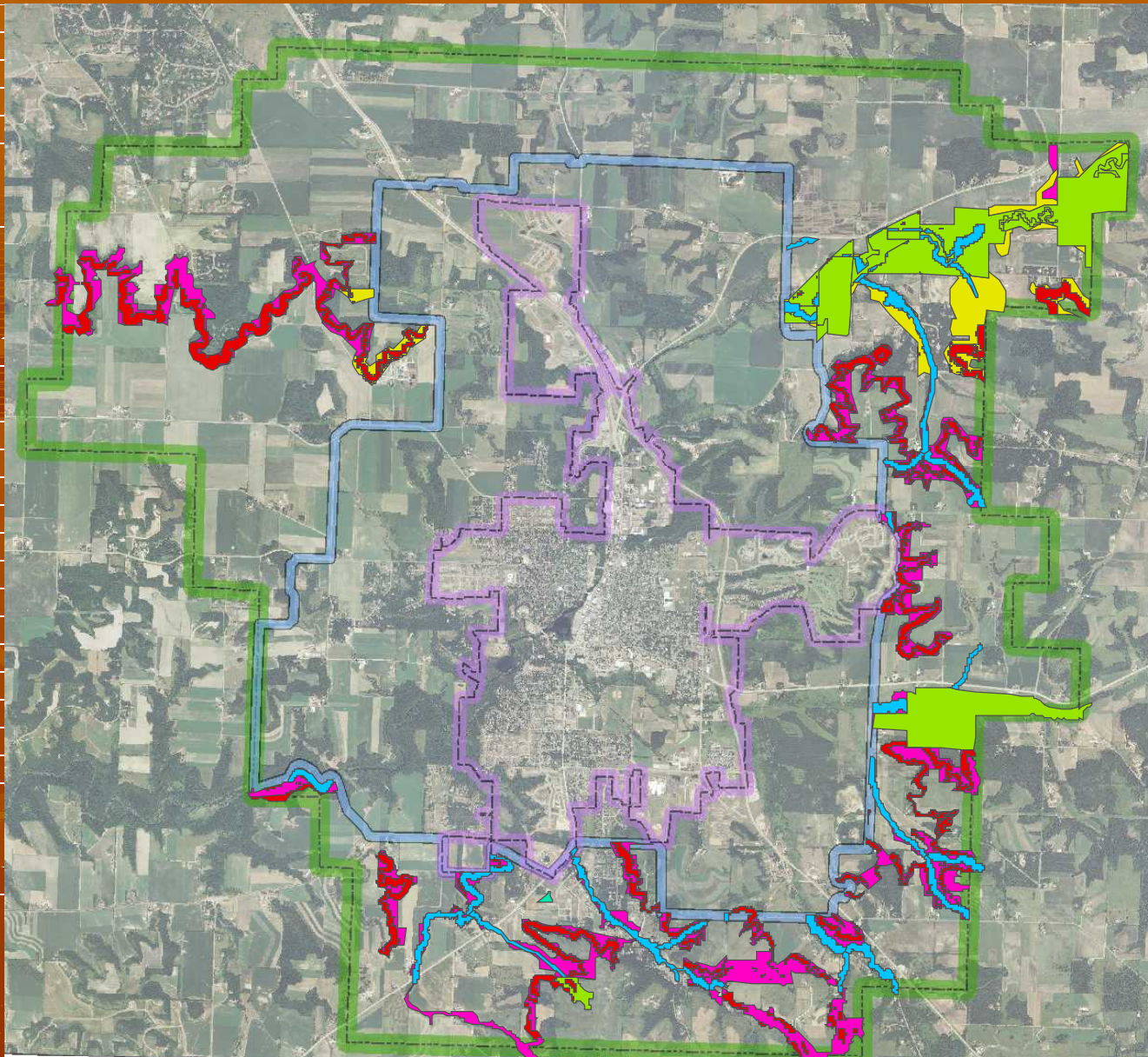
- Total area = 4,195 ac
- Stream Buffers = 225 ac
- Steep Slopes = 107 ac
- Parklands = 472 ac
- Conservancy = 115 ac
- Other Lands = 400 ac
- New Green Space = 110 ac = 2%
- Total = 1,429 ac = 34%



*Within the  
Urban Area  
Boundary...*

# Acres in the Urban Area Boundary

- Total area = 8,017 ac
- Stream Buffers = 582 ac
- Steep Slopes = 619 ac
- Parklands = 134 ac
- Conservancy = 271 ac
- Other Lands = 313 ac
- New Green Space = 693 ac = 9%
- Total = 2,612 ac = 33%



**Within the  
Subdivision  
Boundary...**

# Acres in the Subdivision Boundary

- Total Area = 14,763 ac
- Stream Buffers = 393 ac
- Steep Slopes = 739 ac
- Parklands = 3 ac
- Conservancy = 772 ac
- Other Lands = 238 ac
- New Green Space = 870 ac = 6%
- All-Green Space = 3,014 = 20%

# Entire Area

- Total Area = 26,975 acres
- Total Green Space = 7,048 acres = 26%
- Total New Green Space = 1,673 acres = 6%

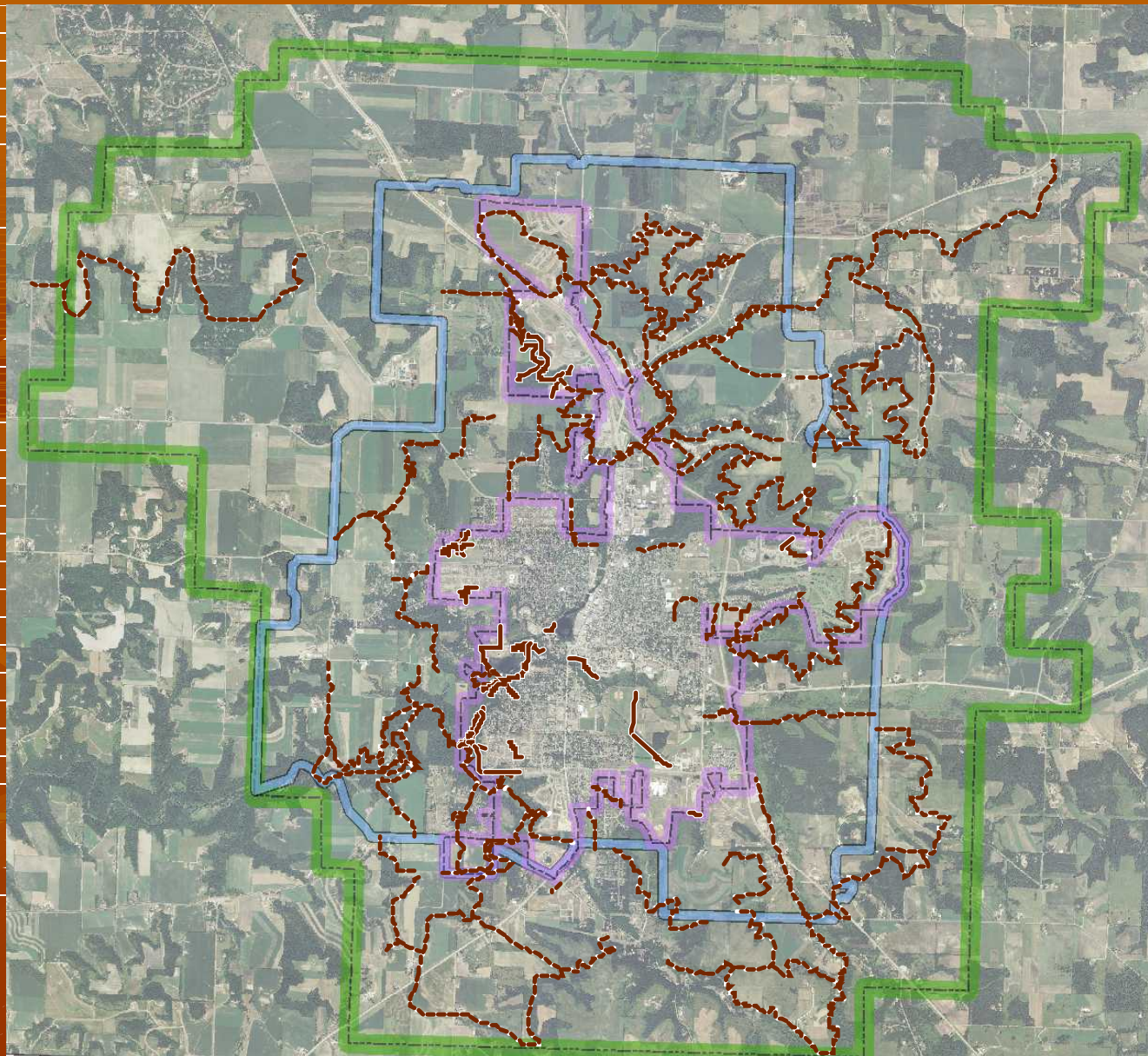
# To Compare...

## Spring Creek Estates:

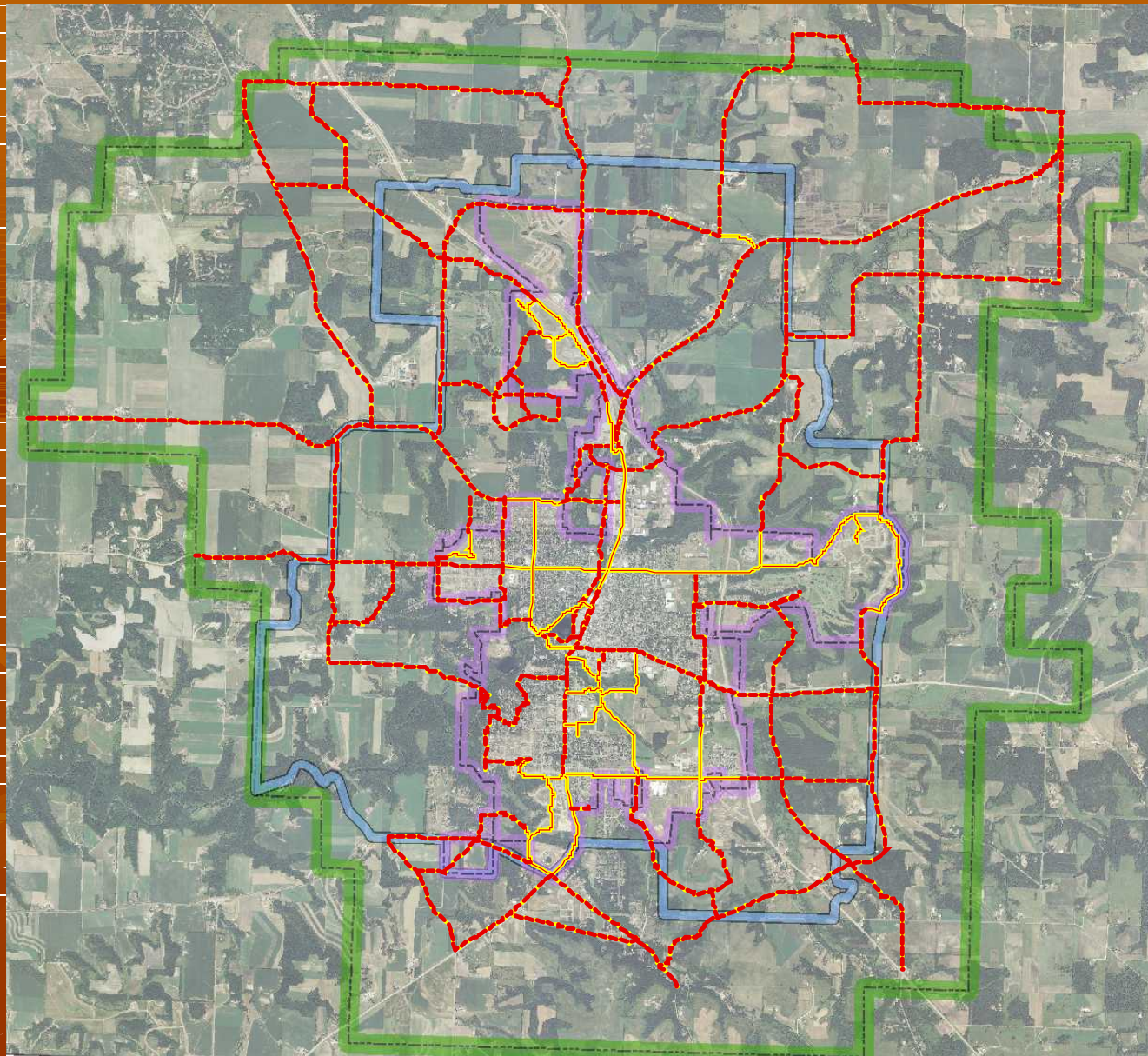
- Total Area = 137 acres
- Open Space = 58 acres
- 42% open space

## Highview Meadows

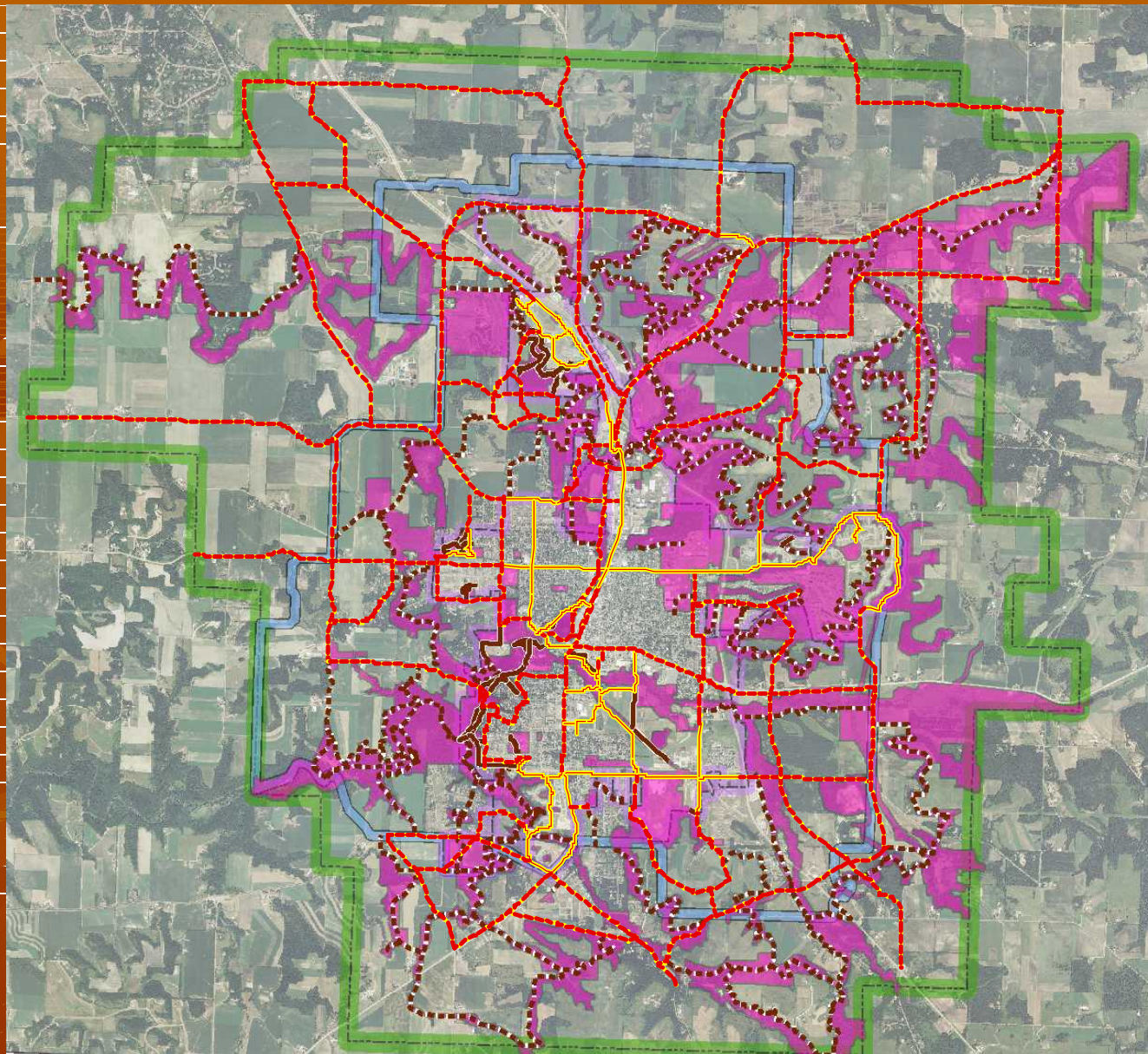
- Total Area = 141 acres
- Open Space = 43 acres
- 30% open space



**Currently, there are around 8 miles of Recreational Trails (solid line), there are 82 miles of proposed trails (dashed line).**



There are currently 19 miles of Destination Paths (solid line), and another 82 miles of proposed destination trails (dashed line).



**Final draft  
map**

# What's Next?

- Possible options:
  - Return to ETF with specific recommendations for refinements
  - Establish a procedure for continuation of effort by Plan Commission, including public involvement
  - Table or suspend effort for time being